

Engines > 2 Litre/Cylinder (Produced Post 1994)

Engine Number Guide		
A 4000 series engine number looks like this: DGB 06 0081 U 0017 B		
Stafford	D United Kingdom	U
Application Code (Genset)	G 17th Engine This Year	0017
Engine Type	B Year Letter (B=1996)	B
Number of Cylinders	06	
Fixed Bill Number (0000 means Configured Product) 0081		

Engine Family and Type Codes 4000 Series

Code: 4000 Series			
DGF	TG	DIE	SI GAS UNIT
DGL	TAG	DIF	TES1 GAS UNIT
DGA	TAG1	DIE	TES1 CHP UNIT
DGB	TAG2	DMD	M4000T
DGD	TAG3	DME	M4000T1
DGM	TWG	DMF	M4000TK
DGK	TWG2	DGE	TAG4
DGN	TWG3	DIG	E * TRS
DGV	TWG2TC	Code: 4006 Series	
DGP	TEG	23TAG1A	-
DGR	TEG2	23TAG2A	-
DGS	TEG3	23TAG3A	-

Engine Number Guide

The 2000/3000 and 2300/2800 series engine numbers look like this: SG A 06 0010 U 0001 Y			
Engine Application:	SG	Country of Manufacture:	U
Engine Family & Type Code:	A	Build Line Number:	0001
Number of Cylinders:	06	Year of Manufacture:	Y
Engine Specification Number:	0010		

Engine Family and Type Codes 2000 & 3000 Series

Family: SA Automotive		Family: SF Forklift	
300TX	SAA	T1	SFA
320MX	SAB	T2	SFB
335TX	SAC	TA	SFC
350E	SAE	TW	SFD
Family: SB Short Block		Family: SG Genset	
375TX	SAG	TAG1A	SGA
340TX2	SAJ	TAG2	SGB
380TX2	SAK	TAG2A	SGC
410TX2	SAL	TAG3A	SGD
Family: SL Long Engine		TAG4	SGE
TX / Euro 2	SLA	TG	SGF
2000 Series	SLB	TGIA	SGG
3008 Series	SBC	TG2A	SGH
3012 Series	SBD	TTAG	SFJ
Family: SH Horizontal		TWG2	SGK
TX / Euro 2	SLA	TAG	SGL
2000 Series	SLB	TAG5	SGM
3008 Series	SLC	Family: SP Plant	
3012 Series	SLD	T	SPA
3008 Marine	SLE	T1	SPB
3008 / 3012SI	SLG	T2	SPC
Family: SI Gas		TA	SPD
SI	SIA	TAP	SPE
SI Gas Unit	SIB	TP	SPJ
TSI CHP	SIC	TTA	SPK
TSI Gas Unit	SID	TTAP	SPL
TWSI CHP	SIE	TW	SPM
TWSI Gas Unit	SIF	TW1	SPP
Family: SM Marine			
M600T1	SMA		
M700T1	SMB		
M800T1	SMC		

Engine Family and Type Code 2300 & 2800 Series

Family: 2300 Series		Family: 2800 Series	
E14TAG1	FGA	E16TAG1	HGA
E14TAG2	FGB	E16TAG2	HGB
E14TAG3	FGD	E18TAG1	JGA
		E18TAG2	JGB
		E18TAG3	JGD

Large Engines (Produced Pre 1994)

Engine Number Guide

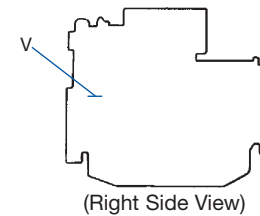
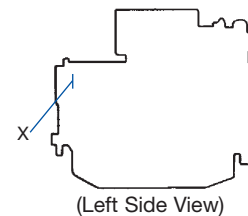
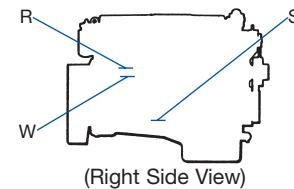
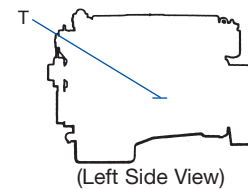
The 2000 & 3000 series engine numbers look like this: 8C 27655 U 88900 W			
Engine Family & Type Code:	8C	Build Line Number:	88900
Engine Specification Number:	27655	Year of Manufacture:	W
Country of Manufacture:	U		

Engine Family and Type Codes

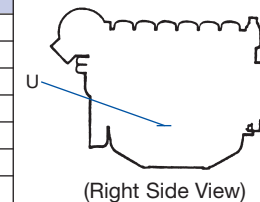
Eagle	8BT, 8CTA, 8DTW
Eagle TX	8CTA
2000 Series	8BT, 8CTA/TTA, 8DTW, 8ESI, 8GTW-H
3008 / CV8	4AT, 4BTA, 4ESI
Condor Marine	4CTI
3012 / CV12	6ATA, 6CTW, 6DT, 6ESI

A Air to Air Charge Cooled	P Pumping Duties
CHP Combined Heat & Power	H 16 Litre (2800 Series)
E Externally Charge Cooled	SI Spark Ignition
G Genset Engine	T Turbocharged
H Horizontal Engine	TT Twin Turbocharged
I Intercooled	W Water Cooled
M Marine	K Keel Cooled
N Jacket Water Charge Cooled	E* Electronic/Litres

Engine Number Location Guide



Engine Type	Position
Eagle/2000 Series	R
3008 Series	T
3012 Series	S
2300/2800 Series	W
4006 Series	U
4008 Series	U
4012 Series	V or X
4016 Series	V or X



Engine Number Guide including Number Location Guide

Year of Manufacture Code

This code indicates the calendar year of manufacture. The letters I, O, Q, R and Z will not be used.

A 1974	M 1985	B 1996
B 1975	N 1986	C 1997
C 1976	P 1987	D 1998
D 1977	S 1988	E 1/1/99-31/3/99
E 1978	T 1989	F 1/4/99-31/12/99
F 1979	U 1990	G 2000
G 1980	V 1991	H 2001
H 1981	W 1992	J 2002
J 1982	X 1993	K 2003
K 1983	Y 1994	L 2004
L 1984	A 1995	M 2005

Country of Manufacture Code

This code indicates the country in which the basic engine was manufactured.

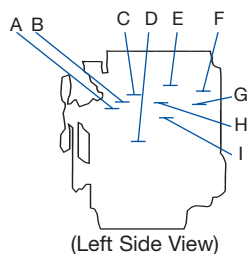
A Argentina	HM Indonesia	P Poland
B Brazil	HK Iraq	S India
C Australia	HU Uruguay	SA South Africa
D Germany	J Japan	T Turkey
E Spain	K Korea	U UK
F France	L Italy	V Pakistan
G Greece	M Mexico	W Iran
H Group	MX Mexico	X Peru
HC China	N USA	Y Yugoslavia

Engines < 2 litre/Cylinder (Produced Post 1974)

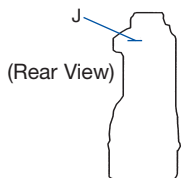
Engine Number Guide

Example:	TU 30008 U 510256 F
Engine family and type code	TU
Parts list number or SOS order reference number	30008
Country of manufacture code	U
Engine serial number	510256
Year of manufacture code	F

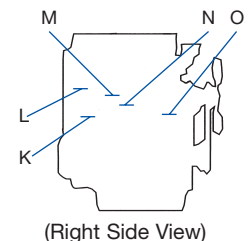
Engine Number Location Guide



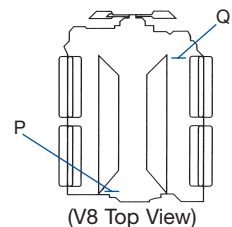
Engine Type	Position
3.152	M
4.108	A
4.154 / 200 Series	B
4.165	B or G
4.203	J or N
4.212	C



Engine Type	Position
4.236	C or L
4.248	C
4.318	F
4.41	H
6.247	C or F
6.354	D
V8540	Q



Engine Type	Position
V8.640	P
700 Series	K
900 Series	C
Perama/100 Series	O
Prima/500 Series	E
Phaser/1000 Series /1100 Series	H or J
Peregrine/1300 Series	I or O



Engine Family and Type Code

A	Phaser/1004 Series	GD	4.25
AA	1004-4	GE	4.30
AB	1004-4T	H	4.165 Series
AC	1004-4T	HA	4.165
AD	1004e-4TW		400 Series
AE	Fed. CC	HB	402C-05
AF	1004-40S	HD	403C-07
AG	1004-4	HH	403C-11
AH	1004-4T	HL	403C-15
	New 1000 Series	HN	404C-15
AJ	1004-40	HP	404C-22
AK	1004-40T	HR	404C-22T
AL	1004-40TA	J	4.203 Series
AM	1004-40T	JD	4.203
AP	1004-40	JE	D4.203
AQ	1004-40T	JF	G4.203
AR	1004-42	JG	4.2032
AS	1004-42	K	Perama/100 Series
AT	1004-40TA	KD	3 cylinder, 1.0 litre
B	Prima/500 Series	KE	3 cylinder, 1.5 litres
BA	504-2	KF	4 cylinder, 2.0 litres
BB	504-2T	KH	3 cylinder, 1.3 litres
C	3.152 Series	KL	3 cylinder, 0.7 litre
CA	P3	KN	2 cylinder, 0.5 litre
CB	3.144	KR	4 cylinder, 2.2 litres
CC	P3.144	KS	3 cylinder, 1.1 litres
CD	3.152	L	4.236 Series
CE	D3.152	LA	4.212
CF	G3.152	LD	4.236
CG	P3.152	LE	G4.236
CJ	3.1522	LF	4.248
CM	3.1524	LG	4.2482
CN	T3.1524	LH	C4.236
	900 Series	LJ	T4.236
CP	903-27	LM	4.41
CR	903-27T	N	4.318 Series
CT	903-27S	NC	4.318
D	1103C Series	ND	4.3182
DC	1103C-33		1104D Series
DD	1103C-33T	NH	1104D-E44T
	1103B Series	NJ	1104D-E44TA
DF	1103B-33	NK	1104D-44
DG	1103B-33T	NL	1104D-44T
	1103A Series	NM	1104D-44TA
DJ	1103A-33		1106D Series
DK	1103A-33T	PJ	1106D-E66TA
E	4.108 Series	R	6.247 Series
ED	4.108	RA	6.247
G	4.154/200 Series		1104C Series
GA	4.154	RE	1104C-44
GB	4.135	RF	1104C-E44
GC	4.182	RG	1104C-44T

Engine Family and Type Code (Continued)

RH	1104C-E44T	WE	1306-7TA
RJ	1104C-44TA	WF	1306-8T NGD
RK	1104C-E44TA	WG	1306-8TA NGD
	1104A Series	WH	1306-9T NGD
RR	1104A-44	WJ	1306-9TA NGD
RS	1104A-44T		1300 Series EDi
SD	Sabre CC6.68	WK	1306-E76T
T	6.354 Series	WL	1306-E76TA
TC	6.354	WM	1306-E87T
TD	H6.354	WN	1306-E87TA
TE	T6.354	WP	1306-E76T
TF	HT6.354	WQ	1306-E76TA
TG	6.3541	WR	1306-E87T
TH	T6.3541	WS	1306-E87TA
TJ	6.3542	X	V8.540 Series
TK	C6.3542	XA	V8.510
TP	T6.3543	XB	TV8.510
TR	6.372	XC	V8.540
TT	TC6.3541	XE	TV8.540
TU	T6.3544		1103D Series
TV	6.3724	XK	1103D-33
TW	6.3544	XL	1103D-33T
TX	C6.3544	XM	1103D-33TA
TY	H6.3544	Y	Phaser / 1006 Series
TZ	HT6.3544	YA	1006-6
U	700 Series	YB	1006-6T
UA	704-30	YC	1006-6T
UB	704-26	YD	1006e-6TW
UC	704-30	YE	Fed. CC
	800 Series	YF	1006-60S
UE	804C-33		New 1000 Series
UF	804C-33T	YG	1006-60
V	1106C Series	YH	1006-60T
VK	1106C-E60TA	YJ	1006-60TA
W	1300 Series Peregrine	YK	1006-60TW
WB	1306-8T	Z	V8.640 Series
WC	1306-8TA	ZA	V8.640
WD	1306-7T	ZB	TV8.640

A	Air to Air charge cooling	H	Horizontal
C	Compensated	N	Narrow Front End
CC	Charged Cooled	P	Timing Chain
D	Direct Injection	S	Spark Ignition
E	Electronic	T	Turbocharged
F	Federal Emissions	U	Unit Injection
FF	Federal	V	V Form
G	Gasoline/Gas	W	Water to Air Charge Cooling

All information in this leaflet is substantially correct at the time of printing but may be changed subsequently by the Company